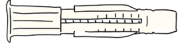


HOW TO PLACE YOUR WOODY ON A WALL

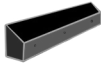
In the package



6x



6x

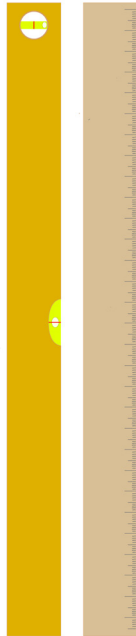


2x french cleat



1x Woody

What else will u need?



Lever tool & ruler



3 mm



6 mm



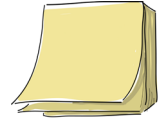
Drill

Tips & tricks



1) **Mark the length of the plug** on the No.6 drill with a tape = how deep into the wall you want to drill.

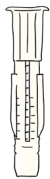
2) Keep **sticky notes** at hand, they will help eliminate some mess later



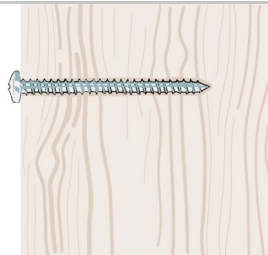
3) Use a **lever tool app** if you don't have the real one.



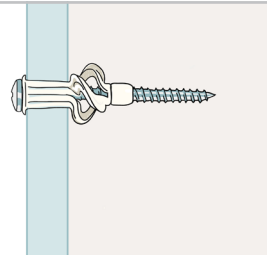
Keep in mind!



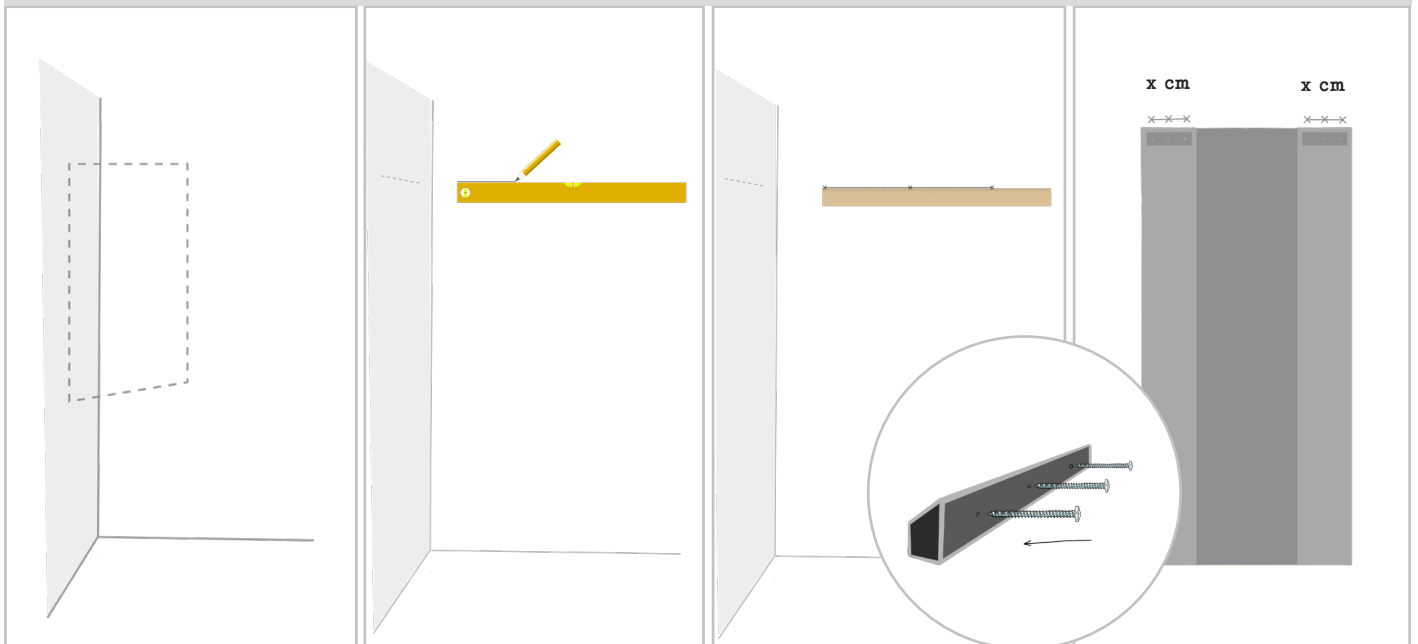
The plugs inside the package fit only into **masonry** and **concrete** walls.



If you have a **wooden** wall, you won't need a plug at all ...



... but into **plasterboard** wall or **hollow bricks**, you'll need to buy another special plug - which is **not included**.

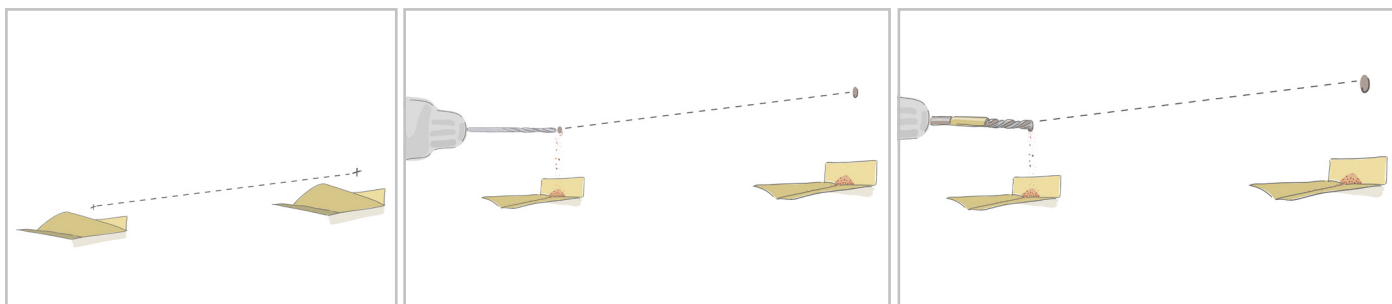


1. **Choose the best place** for your Woody. If unsure check out our **Tips & tricks** articles.

2. Use a **lever tool** to draw a **horizontal line** in the height where you wish to place your Woody.

3. **Mark the spots** where you'll need to drill holes for the plugs and screws in the wall.

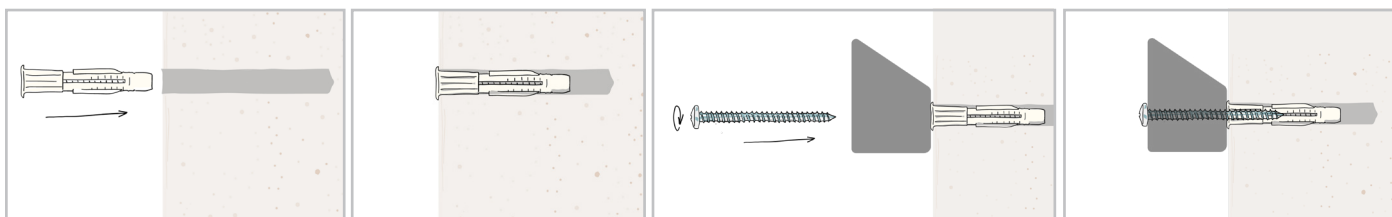
4. Make sure the **distance** between the **marked spots** = the distance between the holes in the **french cleat** which should fit onto its other part already placed on the back side of your Woody.



5. To **eliminate mess** from the crumbling wall while drilling, place **sticky notes** sheets **under the marked spots**.

6. Use the **smaller drill first** (3 mm) to avoid bigger damage on plaster and masonry.

7. Repeat drilling with the **6 mm drill size** = the **same size as your plugs**.

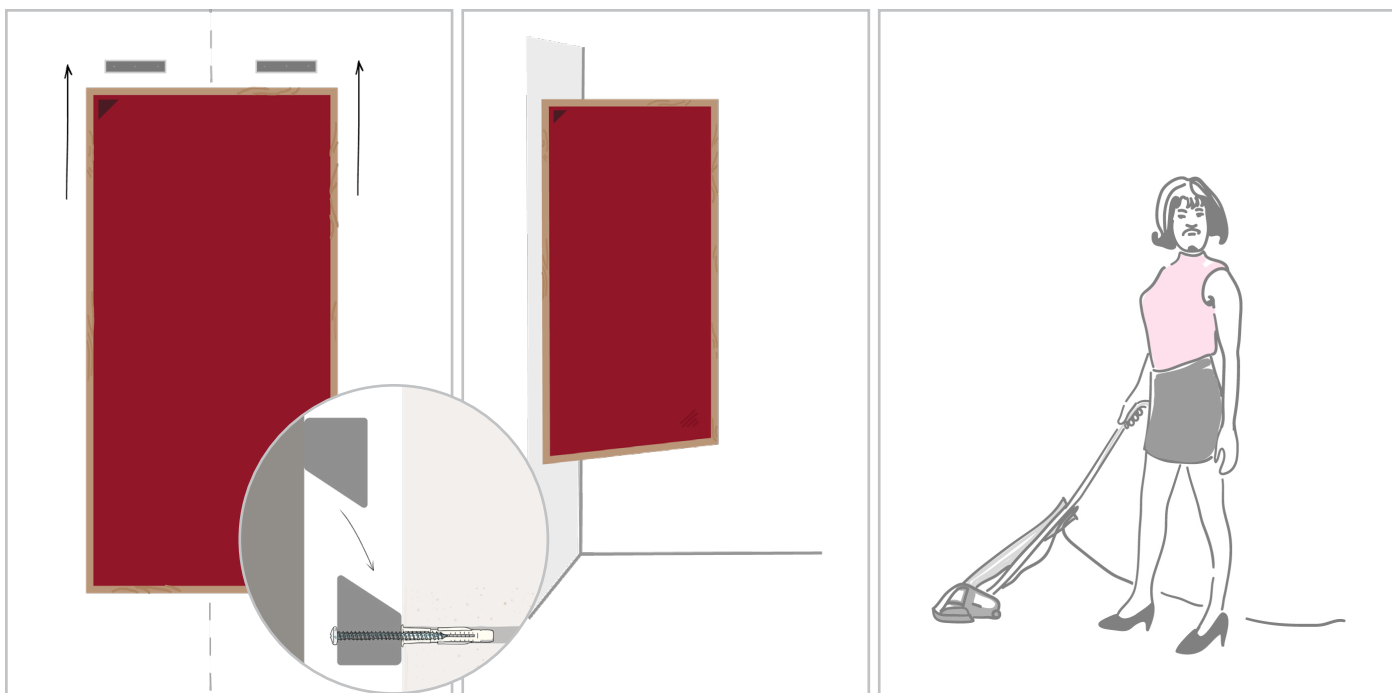


8. Insert the plug into each drilled hole.

9. Make sure it fits properly.

10. Screw 3 screws into both french cleats.

11. Now it should hold tight.



12. Place your Woody onto the french cleats. If there's a **friend** around, ask them to help you.

13. Admire your work.

13. Let's clean it all up for a bit...
... and you're ready Freddie

**THE END
CONGRATS!
NICELY DONE!**

Was this helpful? Do you have any question? Don't hesitate to **contact us!**



Different wall materials require different types of fixing devices. If you are uncertain about what type of screws and plugs to use, please contact your local hardware store.

